

POTTM PTCA^{NC}

Balloon Dilatation Catheter

Technical Specifications

Catheter Type	Rx
Balloon Diameters (mm)	2.25, 2.5, 2.75, 3.0, 3.25, 3.5, 3.75, 4.0, 4.5, 5.0
Balloon Lengths (mm)	6, 8, 10, 12, 15
Nominal Pressure	12 atm
Rate Burst Pressure	22 atm (Ø2.25-4.0) 20 atm (Ø4.5-5.0)
Compliance	Non-compliant
Tip OD	0.0160
Tip Length	2.0mm (Ø2.25-3.0) 2.5mm (Ø3.25-5.0)
Distal Shaft OD	2.55F/2.6F
Proximal Shaft OD	2.0F
Guide Wire Compatibility	Max. 0.014"
Guide Catheter Compatibility	5F (Ø2.25-4.0) 6F (Ø4.5-5.0)
Shaft Length (cm)	140
Coating	<ul style="list-style-type: none"> Hydrophilic external surface coating from tip to adjacent guidewire port Silicone coating inside guidewire lumen

Ordering Information

Balloon Length	Balloon Diameter (mm)									
	Ø 2.25	Ø 2.5	Ø 2.75	Ø 3.0	Ø 3.25	Ø 3.5	Ø 3.75	Ø 4.0	Ø 4.5	Ø 5.0
6mm	833-2206	833-2506	833-2706	833-3006	833-3206	833-3506	833-3706	833-4006	833-4506	833-5006
8mm	833-2208	833-2508	833-2708	833-3008	833-3208	833-3508	833-3708	833-4008	833-4508	833-5008
10mm	833-2210	833-2510	833-2710	833-3010	833-3210	833-3510	833-3710	833-4010	833-4510	833-5010
12mm	833-2212	833-2512	833-2712	833-3012	833-3212	833-3512	833-3712	833-4012	833-4512	833-5012
15mm	833-2215	833-2515	833-2715	833-3015	833-3215	833-3515	833-3715	833-4015	833-4515	833-5015

For more information please visit our website at www.brosmed.com or contact us



BrosMed Medical Co., Ltd
 15th Building, SMEs Venture Park SongShan
 Lake Hi-Tech Industrial Development Zone
 Dongguan 523808, GuangDong, China
 Tel: +86-769-2289 2018
 Fax: +86-769-2289 2016
 E-mail: sales@brosmed.com

BrosMed Medical B.V.
 Mgr. Buckxstraat 8, 6134 AP
 Sittard, The Netherlands
 Tel: + 31 850 140 901
 Mail: CS@BrosMed.com

510(K) Cleared



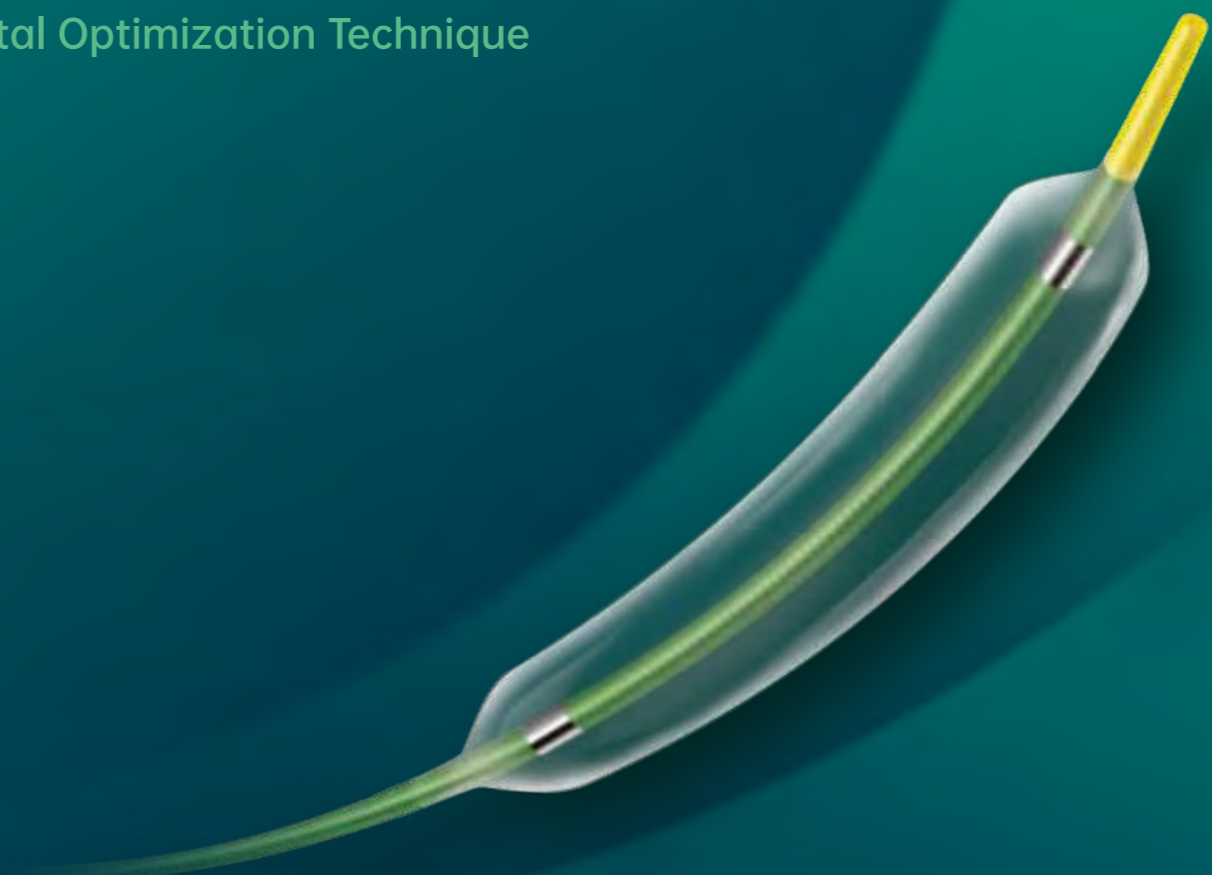
GRA-6043/Rev01
www.brosmed.com



POTTM PTCA^{NC}

Balloon Dilatation Catheter

A dedicated balloon for:
 Proximal Optimization Technique
 Distal Optimization Technique

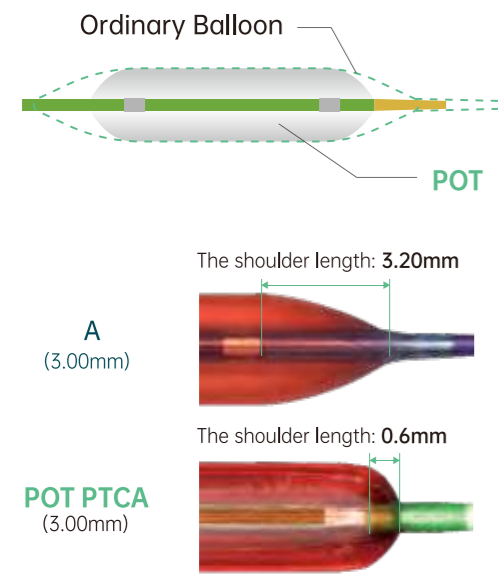


POT™ PTCA^{NC}

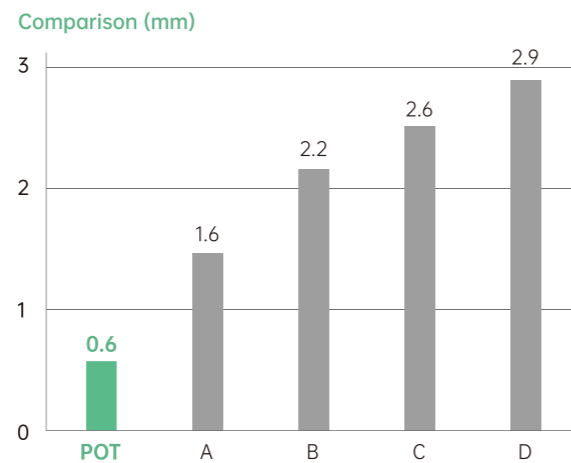
Balloon Dilatation Catheter

A Dedicated Balloon For:
Proximal Optimization Technique & Distal Optimization Technique

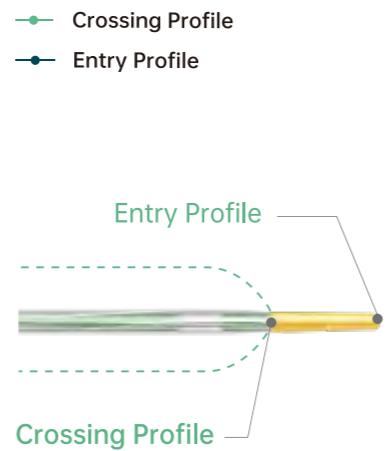
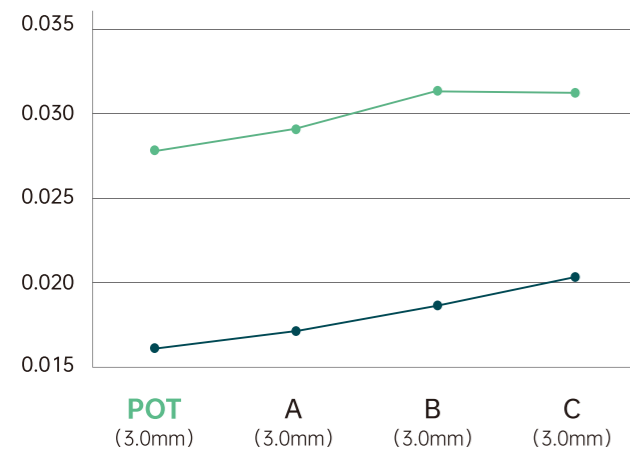
- The extra short balloon shoulders reduce longitudinal balloon growth, minimizing the potential for vessel trauma outside the treatment area.



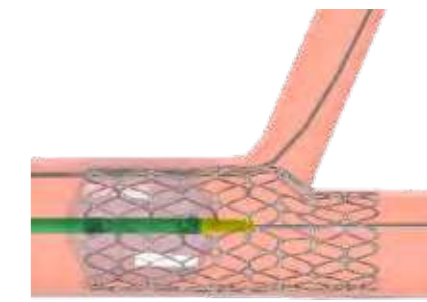
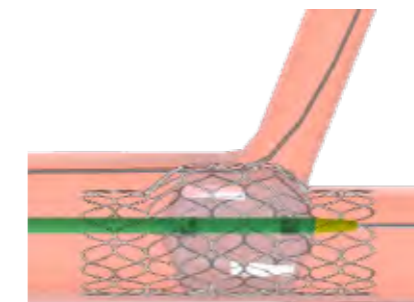
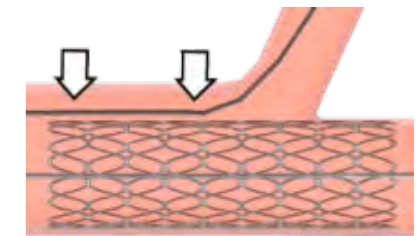
Balloon Shoulder Length



Ultra-low Entry And Crossing Profile

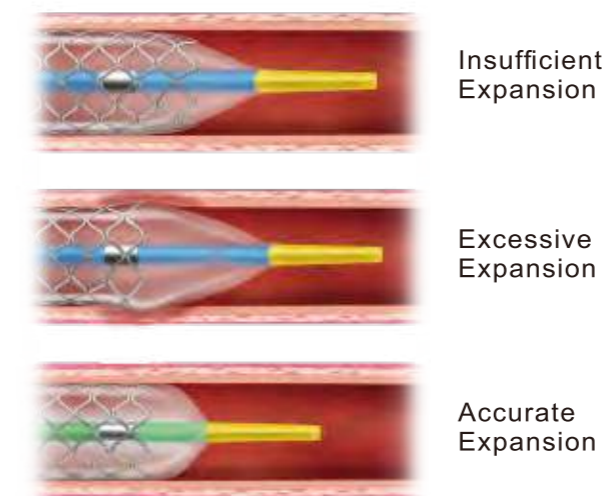


- The proximal segment of the stent can be evenly expanded to improve stent strut apposition

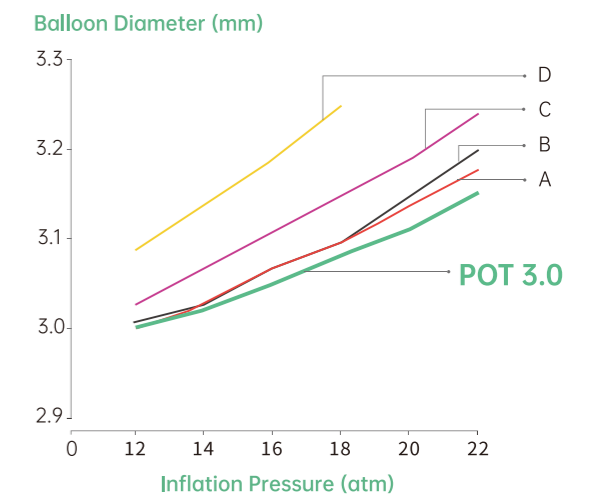


After POT

- Accurate post dilatation stenting.



- Low compliance ensures controlled minimal growth up to RBP without any dog-bone effect.



* Remark: Compliance curves 3.0 mm balloons (Values shown between NP and RBP) Data from product labels